



Josiah Quincy Orchestra Program  
Music Literacy Packet

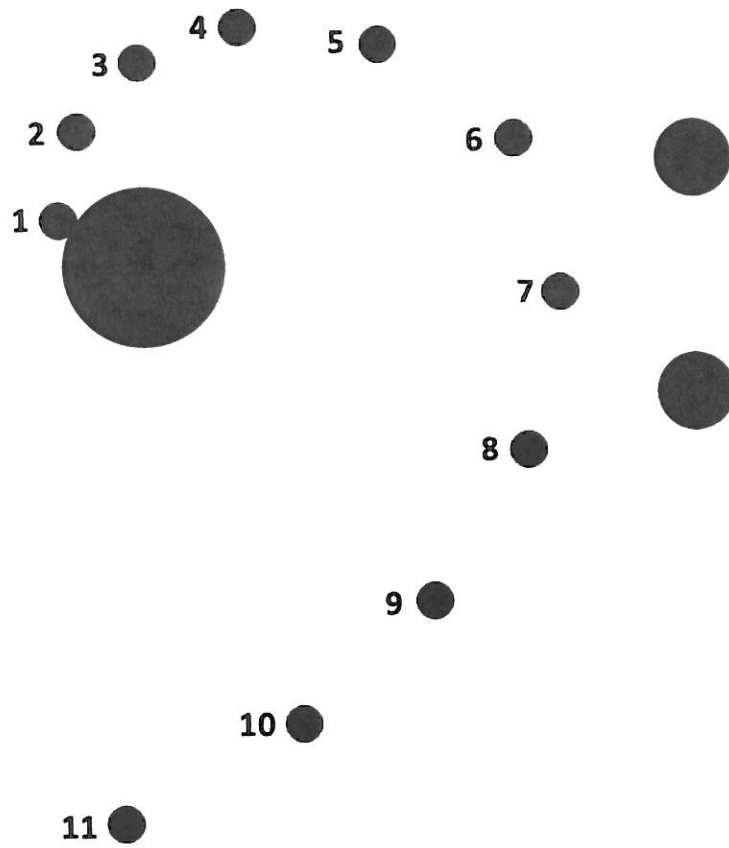
RIMSKY ORCHESTRA

Cello and Bass

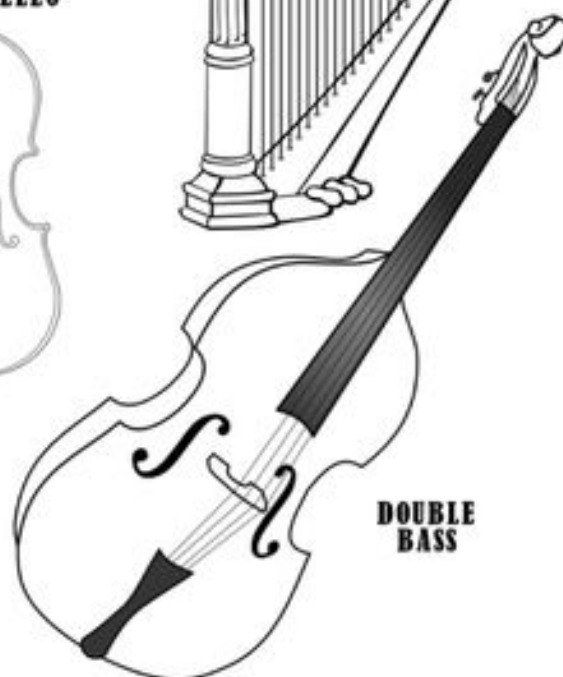
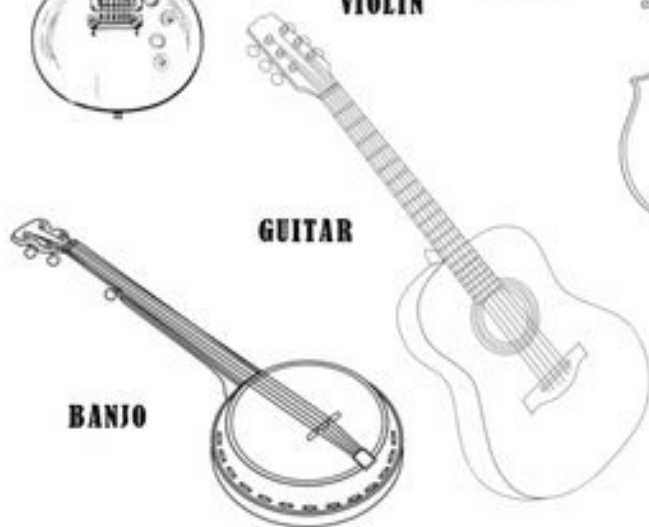
March 17 - April 17, 2020

Name: \_\_\_\_\_

## Bass Clef Dot-To-Dot



# THE STRING FAMILY

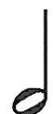


Name \_\_\_\_\_

## Musical Terms

### Worksheet #1

**Matching.** Draw a line from each symbol to its musical term.



1. Quarter note

2. Treble clef

3. *Forte*

4. Dotted half note

5. *Mezzo piano*

6. Whole note

7. *Piano*

8. Bass clef

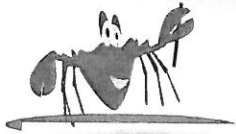
9. *Mezzo forte*

10. Half note

### About This Activity

Drill three basic rhythmic values with this musical math fact worksheet. Provide the answers for the first column of "facts" (Example: ♪ + ♪ = 2). Then try to beat your score with more correct answers, or by racing the clock to complete the second and third columns in record time. This activity is great fun for the music classroom, as kids work together in pairs racing to be the first to complete the worksheet!

♪ + ♪ = 2



# It All Adds Up!

♪ + ♪ =

♪ + ♪ =

♪ + ♪ =

○ + ♪ =

♪ + ○ =

○ + ○ =

○ + ♪ =

♪ + ○ =

○ + ♪ =

♪ + ♪ =

♪ + ♪ =

♪ + ♪ =

○ + ♪ =

♪ + ♪ =

♪ + ○ =

♪ + ♪ =

○ + ♪ =

♪ + ♪ =

○ + ○ =

♪ + ♪ =

♪ + ♪ =

♪ + ○ =

○ + ♪ =

○ + ○ =

♪ + ♪ =

○ + ♪ =

♪ + ♪ =

♪ + ♪ =

○ + ○ =

♪ + ♪ =

Score: \_\_\_\_\_ of 10

Score: \_\_\_\_\_ of 10

Score: \_\_\_\_\_ of 10

Bonus Question:

○ + ♪ + ♪ + ♪ + ○ + ♪ + ♪ + ♪ + ♪ + ♪ + ○ =



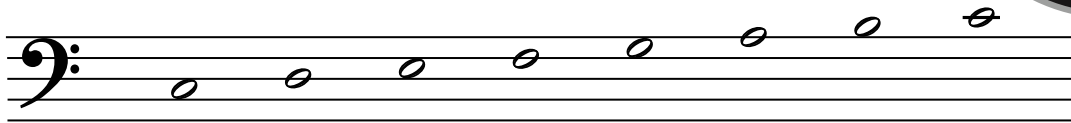
## ABOUT ACTIVITY

CodeBreaker! is a note naming activity that is perfect for the music classroom or beginning instrumental/choral student. The challenge of this activity is to correctly name each note and then write its alphabet letter name on the blank below. The code is broken when the alphabet letters reveal the secret word.

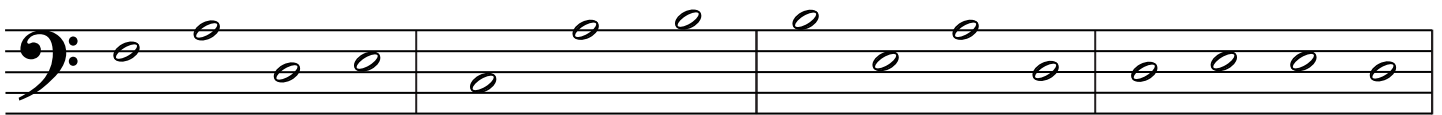
Bass Clef

**TOP SECRET**

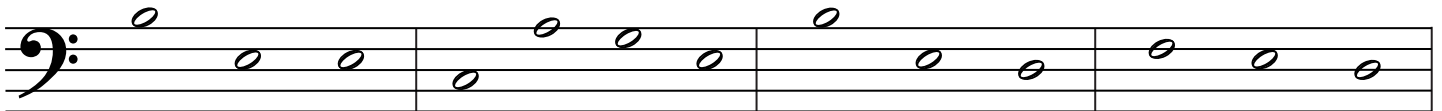
# CODEBREAKER!



C D E F G A B C



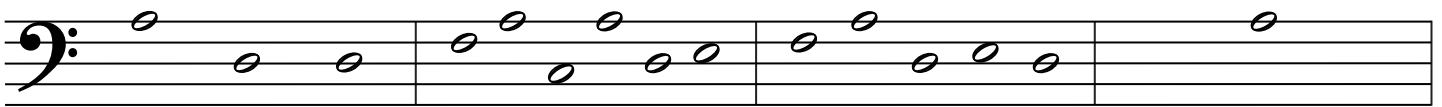
\_\_\_\_\_



\_\_\_\_\_



\_\_\_\_\_

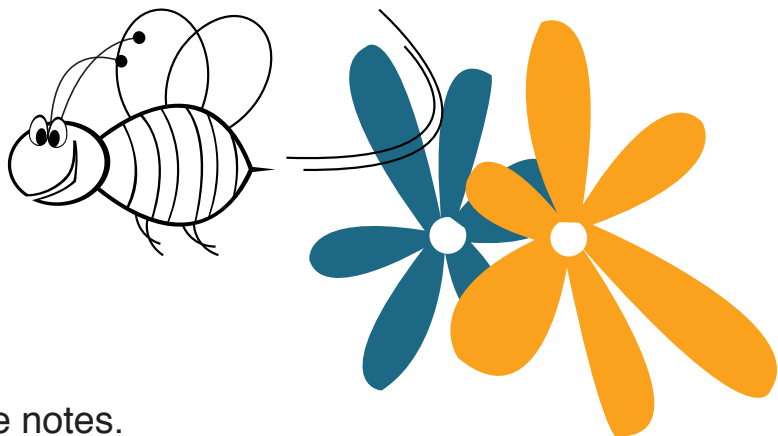


\_\_\_\_\_

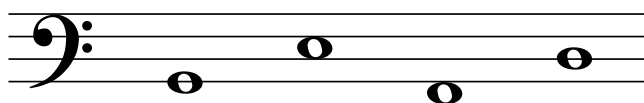


# MUSICAL SPELLING BEE

## Bass Clef Note Names



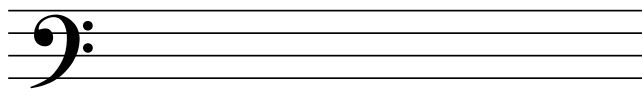
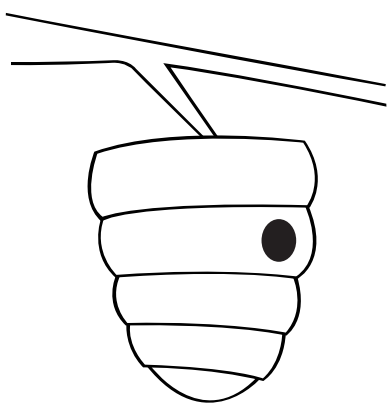
Spell the word below the staff in whole notes.



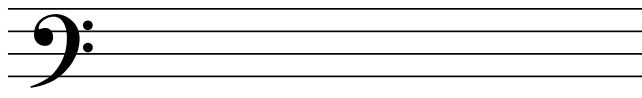
BEAD



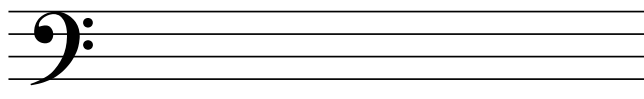
CAFE



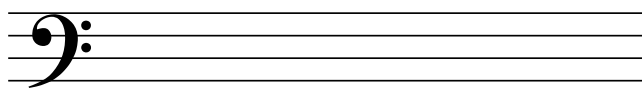
BEEF



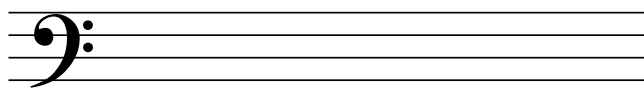
FACADE



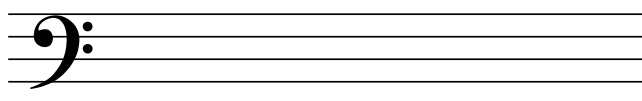
BADGE



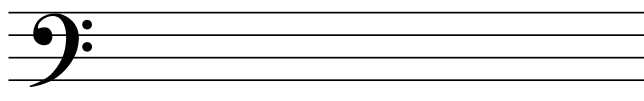
ACE



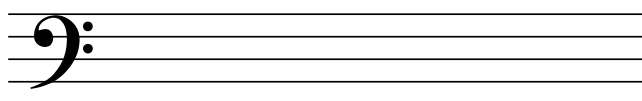
DECADE



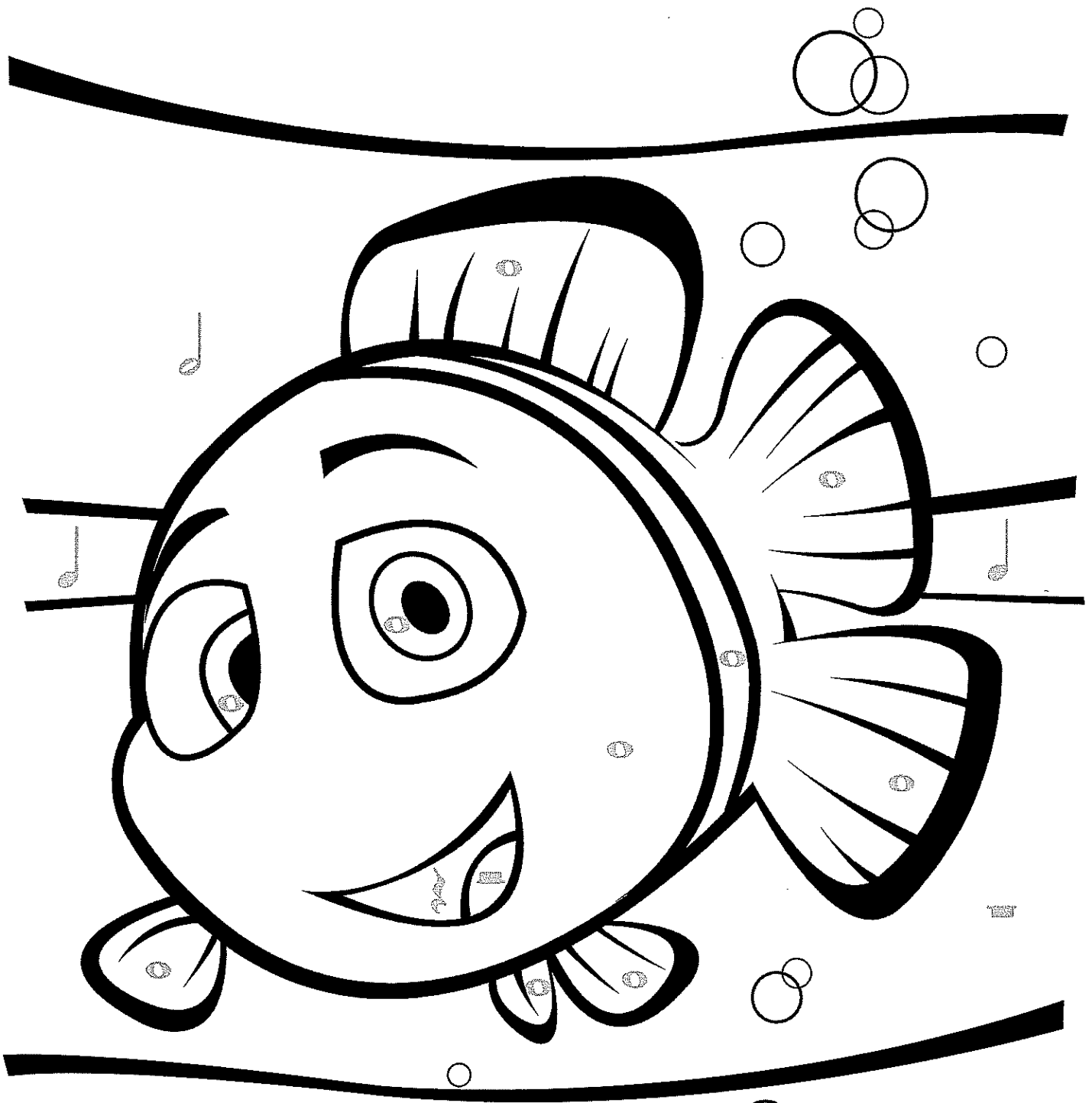
ADAGE



ADD



DABBED



# CLOWN FISH

Quarter Note: Green  
Half Note: Light Blue

Whole Note: Orange  
Quarter Rest: Dark Gray

Half Rest: Red  
Whole Rest: Dark Blue



[www.makingmusicfun.net](http://www.makingmusicfun.net)

Copyright © 2017 [www.makingmusicfun.net](http://www.makingmusicfun.net)