



Josiah Quincy Orchestra Program
Music Literacy Packet

BOULANGER ORCHESTRA

March 17 - April 17, 2020

Name _____

Musical Terms

Worksheet #1

Matching. Draw a line from each symbol to its musical term.



1. Quarter note

2. Treble clef

3. *Forte*

4. Dotted half note

5. *Mezzo piano*

6. Whole note

7. *Piano*

8. Bass clef

9. *Mezzo forte*

10. Half note


Name _____

Musical Terms

Worksheet #2

Fill in the blank. Write the term for each symbol in the blank provided.

1. _____ *mf*

6. _____ 

2. _____ 

7. _____ *p*

3. _____ *mp*

8. _____ 

4. _____ 

9. _____ 

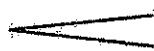
5. _____ *f*

10. _____ 

Matching. Draw a line from each symbol to its musical term.



1. *Crescendo*



2. Time signature



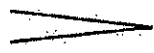
3. Barline



4. *Decrescendo*



5. *Ritardando*



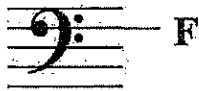
6. Repeat sign

rit.

7. Double barline

The Staff - Bass Clef

The bass clef (also known as F clef) looks like this:

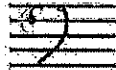


The bass clef gives a landmark on the note F on the 4th line of the bass staff.

To draw the bass clef, draw:
a black dot



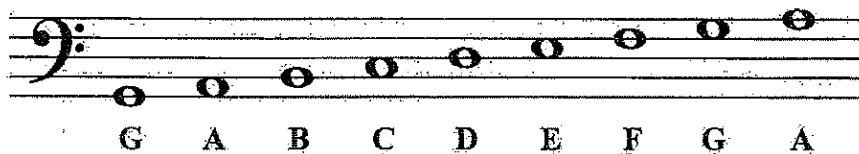
a curve



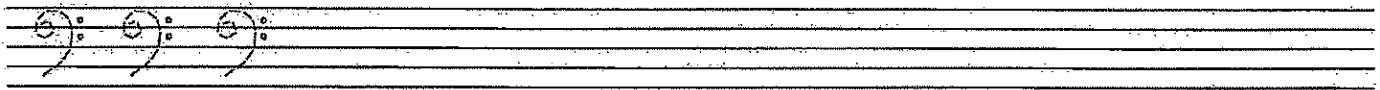
two dots



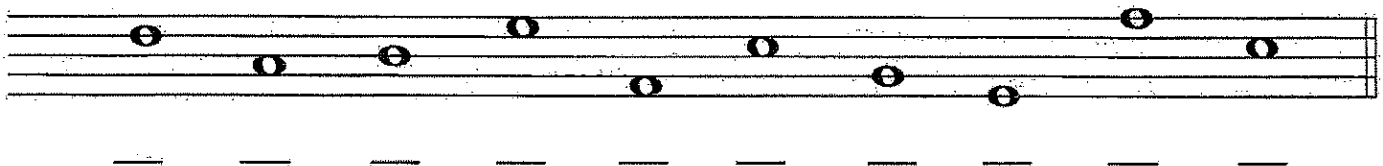
Notes are named after the first seven letters of the alphabet (A through G):



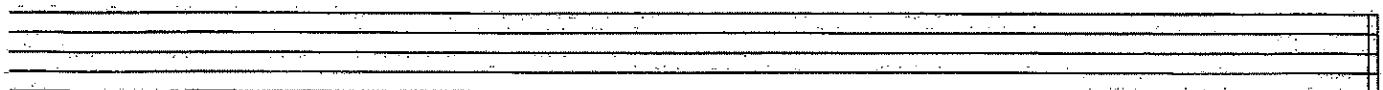
1. Try drawing the bass clef sign by tracing over the dotted lines. Then draw five more of your own.



2. Draw a bass clef at the beginning of the staff. Then write the letter names of each note.



3. Draw a treble clef at the beginning of the staff. Then draw the notes indicated. If a note can be written on more than one place on the staff, choose one.



F G A D F C B G D E

Note Name Speed Test - Grand Staff (20 Notes)

Take the speed challenge! How many notes can you name in 1 minute?

A grand staff consisting of a treble clef on the top staff and a bass clef on the bottom staff. The first measure contains a whole note in the treble clef (middle C) and a whole note in the bass clef (two ledger lines below the staff).

A grand staff consisting of a treble clef on the top staff and a bass clef on the bottom staff. The second measure contains a whole note in the treble clef (D4) and a whole note in the bass clef (C3).

A grand staff consisting of a treble clef on the top staff and a bass clef on the bottom staff. The third measure contains a whole note in the treble clef (E4) and a whole note in the bass clef (D3).

A grand staff consisting of a treble clef on the top staff and a bass clef on the bottom staff. The fourth measure contains a whole note in the treble clef (F4) and a whole note in the bass clef (E3).

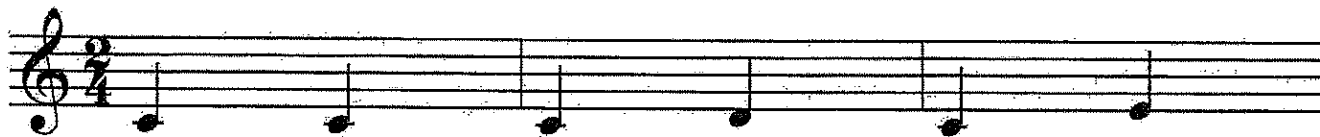
A grand staff consisting of a treble clef on the top staff and a bass clef on the bottom staff. The fifth measure contains a whole note in the treble clef (G4) and a whole note in the bass clef (F3).

Intervals Worksheet

from Unisons to 3rds

Name: _____

- An **interval** is the distance between two notes. Being able to identify intervals quickly will greatly improve your skills at reading music. Below are explanations and examples of the intervals we learned about so far:



Unison

When a note is repeated,
the interval is called a unison.

2nd

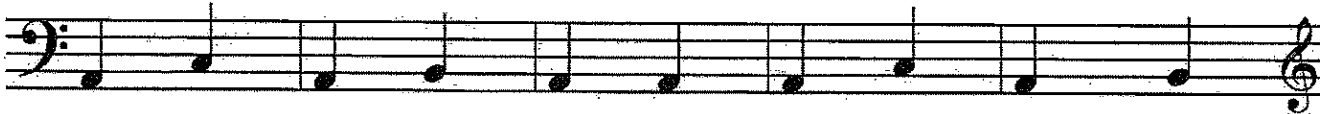
Two notes just a step
apart are called a 2nd.

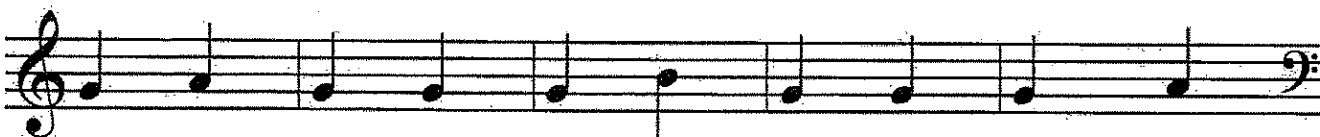
3rd

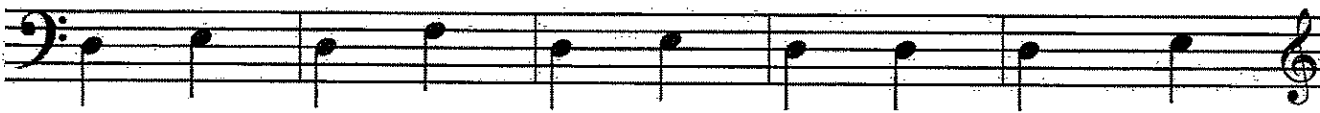
Two notes that are a skip
apart are called a 3rd.

1. Identify the intervals below. Your choices are: Unison, 2nd, or 3rd.











Lesson 7: Basic Rhythm - Rests and Stems

The duration of musical silence is indicated by different types of rests.

quarter rest

1 beat



half rest

2 beats



whole rest

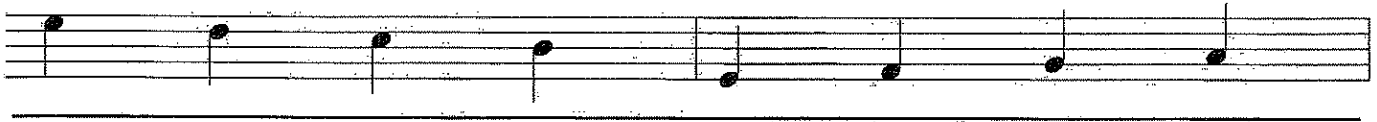
4 beats



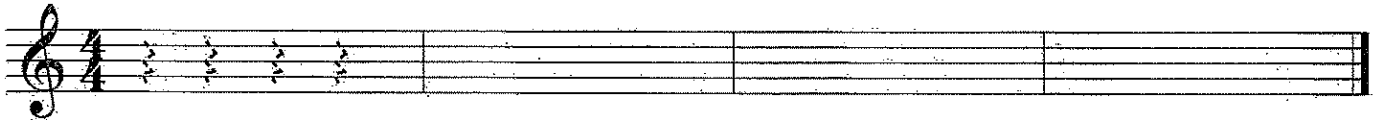
There are rules to follow when drawing stems on half notes and quarter notes.

If the notes are on or above the third line, the stems for half notes and quarter notes are drawn downward on the left side of the notehead.

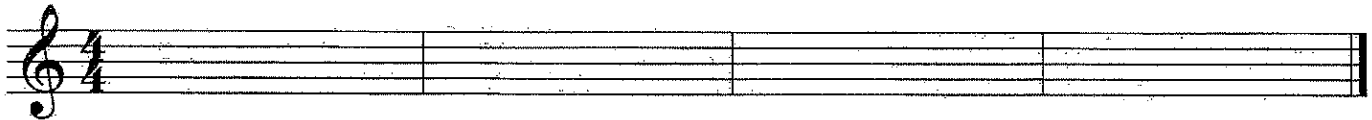
If the notes are below the middle line, the stems are drawn upward on the right side of the notehead.



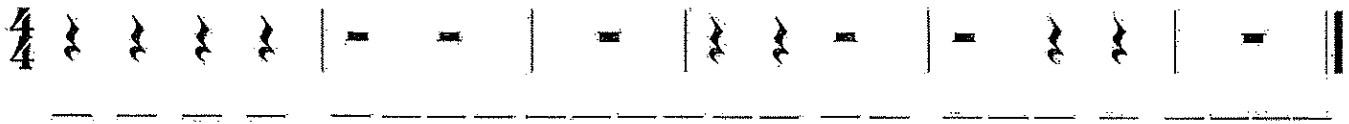
1. Practice drawing quarter rests by tracing over the dotted lines. Draw four quarter rests in each blank measure.



2. Draw two half rests in each of the first 2 measures. Then draw one whole rest in each of the last 2 measures.



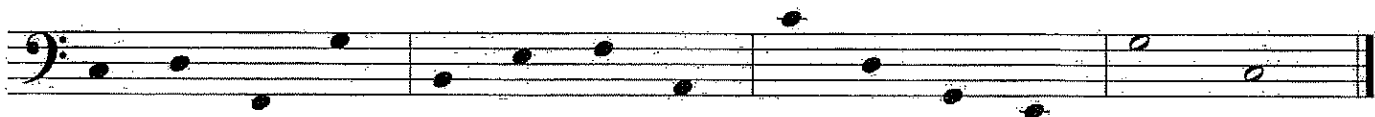
3. Write the count below the rests.



4. Write the count below the notes and rests, then add the missing bar lines.



5. Draw the appropriate stems on the following noteheads.



Name: _____

Date: _____

Time Completed: _____

Note Name Speed Test C - Grand Staff (100 Notes)

Take the speed challenge! How long does it take you to name 100 notes?

The first musical staff consists of a grand staff with a treble clef on the top line and a bass clef on the bottom line. It contains 10 measures of music, each with a single quarter note. The notes are: G4, A4, B4, C5, B4, A4, G4, F4, E4, D4.

The second musical staff consists of a grand staff with a treble clef on the top line and a bass clef on the bottom line. It contains 10 measures of music, each with a single quarter note. The notes are: E4, D4, C4, B3, A3, G3, F3, E3, D3, C3.

The third musical staff consists of a grand staff with a treble clef on the top line and a bass clef on the bottom line. It contains 10 measures of music, each with a single quarter note. The notes are: B3, A3, G3, F3, E3, D3, C3, B2, A2, G2.

The fourth musical staff consists of a grand staff with a treble clef on the top line and a bass clef on the bottom line. It contains 10 measures of music, each with a single quarter note. The notes are: F2, E2, D2, C2, B1, A1, G1, F1, E1, D1.

The fifth musical staff consists of a grand staff with a treble clef on the top line and a bass clef on the bottom line. It contains 10 measures of music, each with a single quarter note. The notes are: C2, D2, E2, F2, G2, A2, B2, C3, D3, E3.